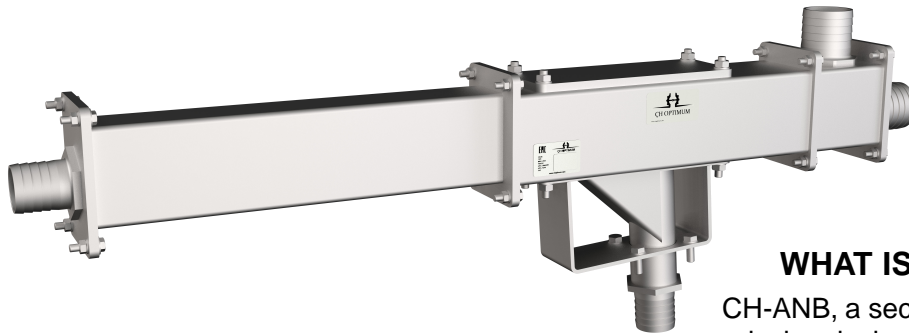


## CH-ANB-50 Sample Divider

## DATASHEET



### WHAT IS THE SAMPLE DIVIDER?

CH-ANB, a secondary gravity sample divider, is a device designed for sampling in slurry pipelines within the mining industry. This sample divider allows precise control of the sample quantity through its adjustable cutter gap. It is made entirely of stainless steel and offers easy installation.

#### Specifications

Type	
CH-ANB-50	W x L x H (120mm x 1200mm x 412mm), 20kg
Flow Rate	
Maximum Capacity m <sup>3</sup> /h (l/min)	25 (400)
Materials	
Sampler body	Stainless Steel (AISI 304, EN 1.4301)

#### Process Connections

Inlet	Outlet & Vent	Sample Outlet Pipe
2" (60,3mm)	2 1/2" (76,1mm)	2" (60,3mm)

Other connections available upon request. Sampler is connected straight to the pipeline. The size of the sampler is selected according to the size of the pipeline.

#### Ambient Conditions

Operating temperature	0 – +50°C
Storing temperature	-20 – +50°C

